



MINISTRY OF EDUCATION

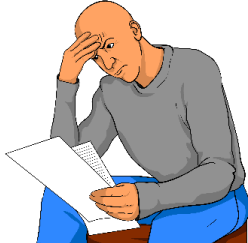
Te Tāhuhu o te Mātauranga

**Have your say about talking with
Deaf and Disabled people**



**Easy Read
survey**

Contents



Page Number

Before you start 2

About this survey 3

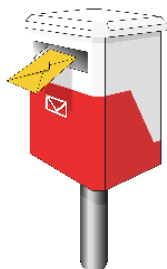


Questions about you 6

More information about you 9

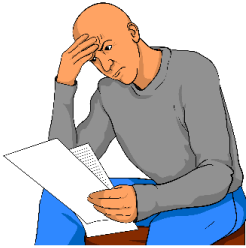


Questions about talking
with people 15

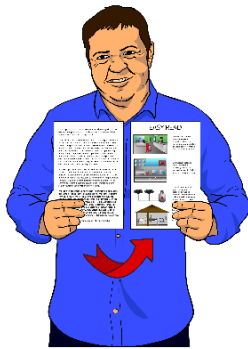


What to do next 21

Before you start



This is a long document.



While it is written in Easy Read it can be hard for some people to read a document this long.



Some things you can do to make it easier are:

- read it a few pages at a time
- have someone help you to understand it.

About this survey



The Ministry of Education wants to know the best way to talk with:

- Deaf people
- Disabled people.



The Ministry of Education has made a **survey** for you to do.



A **survey** is a way to get information from people.

A survey asks questions about something an organisation wants to know about.



This survey will ask you about:

- you
- how people talk to you
- how you like being talked to
- how you do not like being talked to.

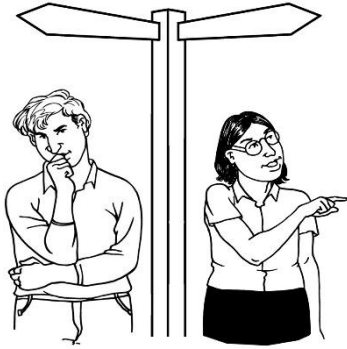


Your answers to the survey questions will help the Ministry of Education to:

- make information about talking to Deaf and Disabled people.
- train their staff.



The information will be put together in a small book called the **Engaging with Deaf and Disabled People toolkit**.

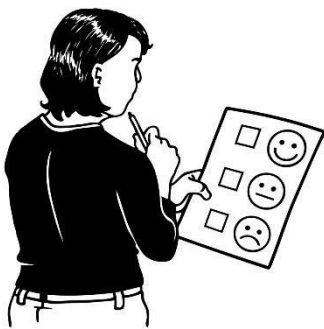


You can choose to:

- do this survey
- **not** do this survey.

If you do the survey you:

- do not have to answer all the questions
- can decide which questions you answer.



The survey is **anonymous**.

This means that the survey will not ask you for your name.



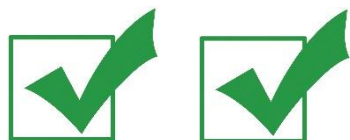
The survey questions start on the next page.

Questions about you



1. What is your ethnicity?

Ethnicity is another word for your culture.



Please tick the boxes that are right for you:

New Zealand European

Tongan

Māori

Chinese

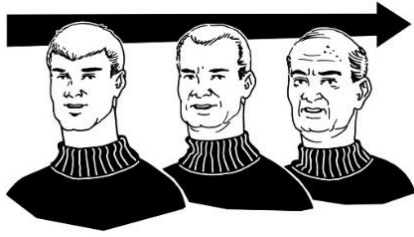
Cook Islands Māori

Tokelauan

Niuean

Other

Samoan



2. How old are you?



Please tick 1 box:



13 – 18 years

18 – 25 years

25 – 35 years

36 – 45 years

46 – 55 years

56 – 65 years

65 years or older





3. What is your gender?



Please tick 1 box:



male



female



gender diverse



I do not want to say

More information about you



4. Please tick the box if:

you are Deaf.



Please write on the lines below if you would like to tell us more about being Deaf.



5. Please tick the box if:

you have a disability.



Please write on the lines below if you would like to tell us more about your disability.



6. Please tick the box if:

you have a Deaf or Disabled family member.



Please write on the lines below if you would like to tell us more about your family member.

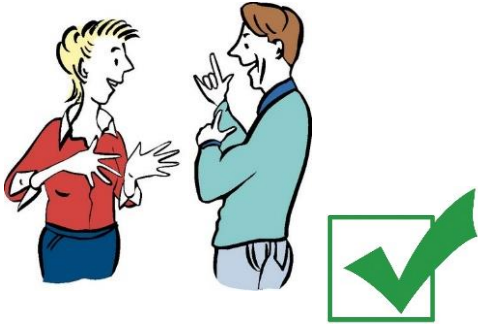


7. Please tick the box if:

You work with Disabled people.



Please write on the lines below if you would like to tell us more about your work.



8. Please tick the box if:

You work with Deaf people.



Please write on the lines below if you would like to tell us more about your work.



9. Please tick the box if:



You have another reason to do this survey.



Please write on the lines below if you would to tell us why you are doing this survey.

Questions about talking with people



10. When you are talking in a group of people what things help you?

Please write your answer on the lines below.



11. When you are talking in a group of people what makes you feel listened to?

Please write your answer on the lines below.



12. When you are talking in a group of people what things make it hard to talk?

Please write your answer on the lines below.



13. When you are talking in a group of people what can make it easier for you to talk?

Please write your answer on the lines below.



14. What would you like other people to know that will help you when talking in a group?

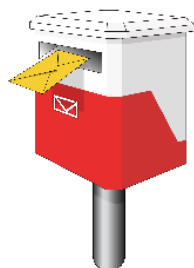
Please write your answer on the lines below.



15. Is there anything else you would like to tell us about talking in a group?

Please write your answer on the lines below.

What to do next



Please send your survey to:

Ministry of Education

Mātauranga House

33 Bowen St

WELLINGTON 6140

Attn: Nicola Meek



Thank you for doing this survey.



**This information has been translated into Easy Read
by People First New Zealand Inc. Ngā Tāngata Tuatahi**

